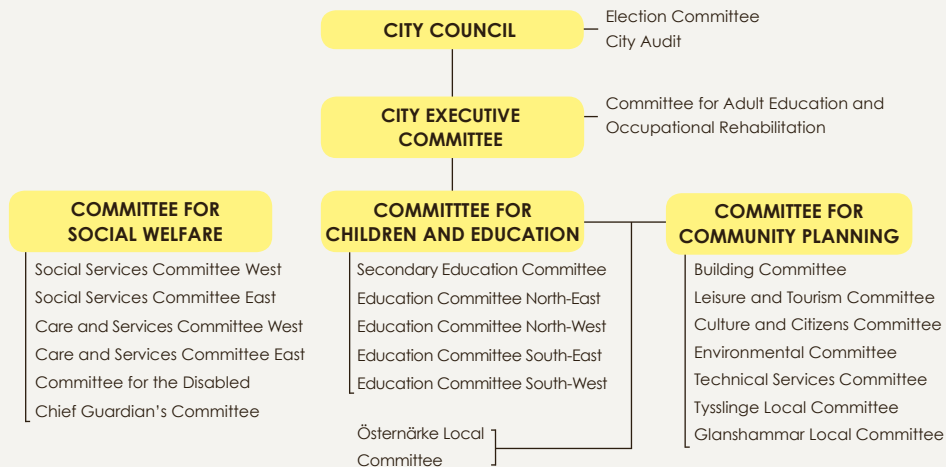


Political organisation



How the money is used in the municipality

Allocation of 100 sek 2013

Compulsory education	21 SEK
Care of elderly	21 SEK
Preschools	14 SEK
The disabled	11 SEK
Social services	10 SEK
Upper-secondary education	8 SEK
Leisure and culture	6 SEK
Infrastructure and protection	4 SEK
Other educational activities	2 SEK
Business activities	1 SEK
Employment programmes and receiving refugees	1 SEK
Political operations	1 SEK



NORDIC ECOLABEL Printed Matter 341 009



Facts Örebro

2014

PHOTO FRONT PAGE: THE MUNICIPALITY OF ÖREBRO.
PRINT: EDITA BOBERGS AB.
PRODUCTION: ADVANT PRODUKTIONSBYRÅ.



Facts

POPULATION

140,599 inhabitants, 71,467 women and 69,132 men, there are citizens from 165 countries.

AREA

1 380 km².

GEOGRAPHICAL POSITION

Situated in central Sweden, 200 km from Stockholm and 300 km from Gothenburg.

HISTORY

Örebro is 750 years old. Building work on Örebro Castle started in the 13th century.

SCHOOLS AND EDUCATION

Örebro University, 16 upper secondary schools where of 6 municipal, more than 40 compulsory schools and some independent schools.

LOGISTIC CENTRE

With an airport, railway and European motorways.

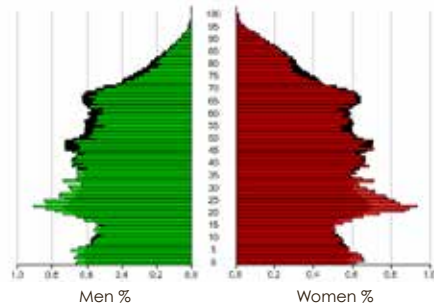
HERE YOU CAN FIND

Swedens forth largest lake Hjälmarren, deep forests and open landscape and 19 cultural and nature reserves.

SWEDEN'S BEST MUNICIPALITY 2013

Population

A comparison with Sweden as a whole
(The dark bars show the population of Sweden)



AGE	ÖREBRO %	SWEDEN %
0-6	9	8,4
7-17	11,9	11,9
18-64	61,3	60,3
65-79	12,9	14,3
80-	4,8	5,2
Total	100	100

Business and commerce

Major companies and organisations
2012 in number of employees

	EMPLOYERS	NUMBER
1	The Municipality of Örebro	13,825
2	Örebro County Council	5,925
3	Humania Assistans AB	2,525
4	Atlas Copco Rock Drills AB	1,925
5	Örebro University	1,175
6	Statistics Sweden	675
7	Assistansbolaget i Sverige AB	575
8	Swedish Transport Agency	575
9	National Policy Board	475
10	Örebrobostäder AB	425

Commuters (2012)

	MEN	WOMEN	TOTAL
Commuters to Örebro	9,396	6,892	16,288
Commuters from Örebro	6,534	4,193	10,727

So far we have no statistics for 2013.

Employees by sector (2012)

	MEN	WOMEN	TOTAL
Agriculture, forestry and fishing	739	195	934
Manufacturing and extraction	5,087	1,277	6,364
Energy supply and environment	421	116	537
Construction	4,470	378	4,848
Commerce	5,808	4,072	9,880
Transport and storage	3,039	723	3,762
Hotels and restaurants	1,027	1,182	2,209
Public relations	1,567	570	2,137
Credit agencies and insurance companies	408	426	834
Property activities	828	431	1,259
Company services	4,079	3,442	7,521
Civil authorities and defence	2,337	3,218	5,555
Education	2,346	5,876	8,222
Community care services	2,711	11,111	13,822
Cultural and personal services etc.	1,442	1,735	3,177
Other departments	167	219	386
Total	36,476	34,971	71,447

So far we have no statistics for 2013.